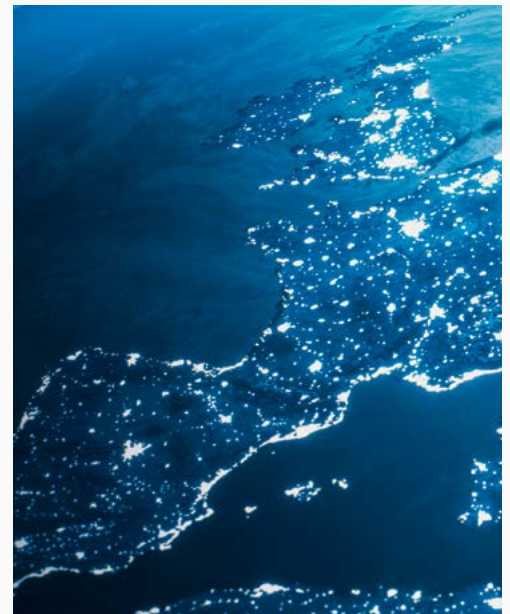
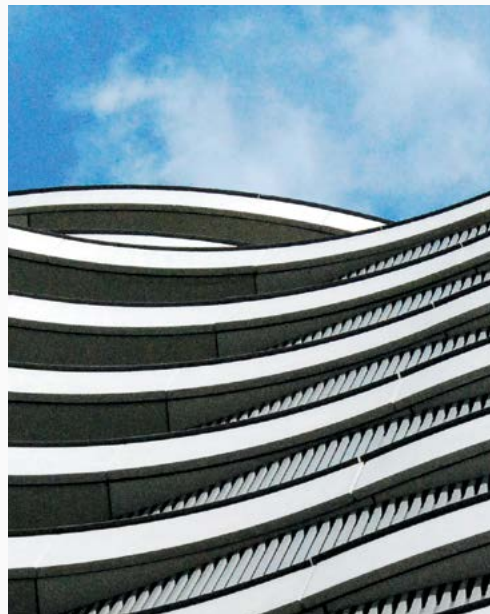


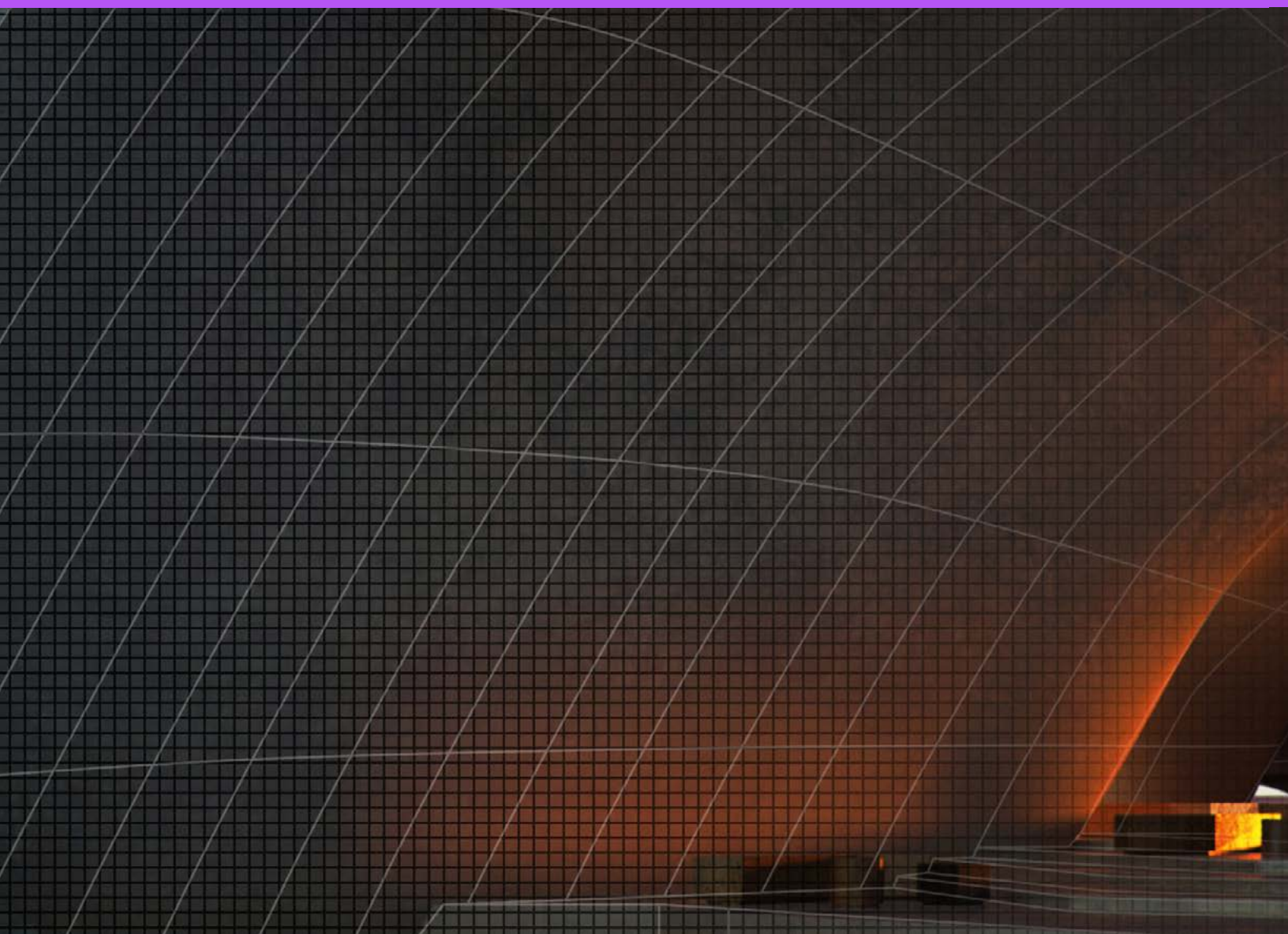
HP DesignJet Impact



Business | Clients | Community



30 years ago, the HP DesignJet was born...



1970s and 1980s	1990s	2000s
<p>HP small and large-format pen plotters set the reference. A few years later, HP invents Thermal Inkjet technology, transforming the entire office printing experience.</p>	<p>HP DesignJet printers are launched—fast, affordable, and high-quality monochrome and color printing transforms the way architects and engineers work.</p>	<p>HP innovation continues with pigment-based inks delivering exceptional large-format photo quality for GIS and rendering.</p>

This led to a lifelong partnership with architects, designers, and creators, that continues to this day.



2023

HP DesignJet takes a giant leap forward in terms of productivity and security with the HP DesignJet XL 3800 Printer, which is fast, efficient, and HP Wolf Enterprise secure.

2019

The innovation continues with the HP DesignJet XL-series, providing extreme reliability in the most immediate, robust, compact, and secure MFP.²

2010

HP launches the first web connected and multifunction large format printers.

2015

HP reinvents large format printing with the HP DesignJet T830 Multifunction Printer, a robust, compact, Wi-Fi ready MFP with a built-in scanner, available at an unbeatable price.¹

2018

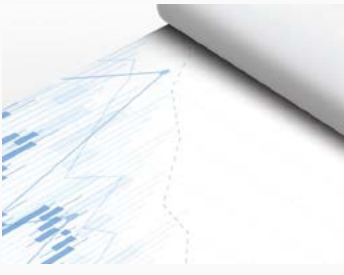
HP expands its proven HP DesignJet Z-series portfolio, reinforcing focus on high-impact graphics with HP DesignJet Z9+/Z6 PostScript® Printers.

One portfolio. Impact for every industry.



You and your clients have exacting standards. The HP DesignJet portfolio of printers, as well as our software, inks, and printing materials are designed to meet and exceed them. Our HP DesignJet XL, Z-series, and T-series printers deliver the image quality, accuracy, speed, security, and color necessary to satisfy even the most demanding clients, while keeping costs low and helping you win new and repeat business.





General in-office and large format printing

Take on technical, graphic, or other applications with HP DesignJet printers that provide terrific ease-of-use and flexibility. Print different document types and sizes.



Geographic information systems, exploration, utilities, and land management

Print, copy, and scan drawings, satellite and aerial photos, maps, and more that communicate clearly with excellent image and line quality.



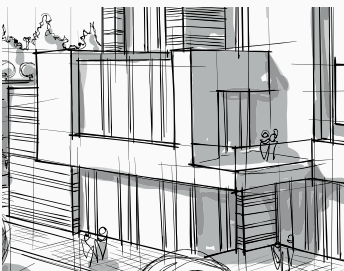
Reprographic and graphic print service providers

With HP DesignJet, reprographic houses can print, scan, and copy accurate and low-cost monochrome and color plans, plan sets, and renderings. You can quickly print posters, color proofs, POP displays, event signages, and more.



Manufacturing, automotive, and transportation

Print big, so even the smallest details get noticed. Produce large format plans, drawings, renderings, and more—easily, quickly, and with vibrant quality.



Architecture, engineering, and construction

Print large format drawings, schematics, renderings, and presentations with great ease, speed, and quality. HP DesignJet printers and MFPs can help build and grow your business.



Temporary retail POP and POS

Tailor your message to customers in stores with information, product displays, and sales offers delivered on demand. For signage with impact, choose large format HP DesignJet printers.



Education

Encourage learning with large format signs used for teaching, everyday communications, and more. HP DesignJet printers can help students make the grade.



Digital and fine art, and graphic design

Show off your digital design with large format prints and presentations. Produce fine art prints and reproductions that demonstrate strict color accuracy and high quality.



Photography

Bring your vision to life with large format photographs. HP DesignJet printers enable you to share and promote your work with professional photo quality and accuracy that are true to your vision.



High-quality POP and exhibition indoor signage

Create high-impact signage that lasts with HP DesignJet printers. Show off your brand with large format prints that demonstrate superb quality along with durable and lasting results – and make a big impression.



Copy shops and quick printers

Print more of the documents your customers want with HP large format printers that are easy, flexible, fast, and cost effective. Take on a wide variety of jobs and deliver stunning results.

Impactful solutions



You

want to optimize your workflow. This means accomplishing more while saving money, managing your entire fleet (including non-HP large format printers), and boosting productivity.

We

have created advanced software solutions and applications that work with HP DesignJet printers to do exactly what you want.





HP Click Print solutions

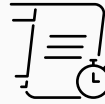
Radically simplify your printing experience with these easy-to-use job-submittal tools. Save time, print confidently and avoid surprises.

HP Click App



Print from the application available on Windows & Mac,³ and enables real-print preview and driverless printing.

HP Click Driver



Print directly from any Windows 11⁴ program, including common CAD applications with all the benefits of HP Click software with the world's most advanced large-format driver.⁵

Learn more and check compatible models at hp.com/hp-click



HP SmartStream software

Make your large format production workflow twice as efficient.⁶
Learn more at hp.com/go/smartstreamdesignjet



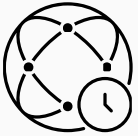
HP Mobile Printing

An easy way to print, scan, and share with your smartphone or tablet with the HP app.
Learn more at hp.com/go/designjetmo



HP Embedded Web Server

Enables you to view printer status information, change settings, and manage a limited number of printers at your computer.



HP Web Jetadmin

A web-based print management tool for businesses with more than 15 printers. Lets IT administrators install, configure, monitor, troubleshoot, and manage fleets. Learn more at hp.com/go/wja



HP PrintOS

Get more out of your HP DesignJet printers, simplify and automate your print production processes, and collaborate in new ways to grow your business. Learn more at www.hp.com/go/printos

Feature availability and related performance varies by printer, and may be optional. See individual product data sheets for more information at hp.com/go/designjet

Original HP Inks



Engineered to work as an optimized system with HP DesignJet printers to provide outstanding results and reliable, trouble-free performance. The result? Less downtime and lower printing costs. Use Original HP Inks to maximize printhead life and ensure full HP warranty protection.

Learn more at hp.com/go/originalhpinks

HP Flex Tech Inks

Formulated to excel on plain and coated papers, HP Flex Tech Inks deliver incredible line clarity and durability thanks to its pigmented formula, for use exclusively with HP's latest DesignJet technical printers.⁷

HP Bright Office Inks

Formulated to excel on plain papers, these fast-drying inks are a blend of HP dye-based bright color inks and HP pigment-based black ink for use with select HP DesignJet T-series printers.⁸

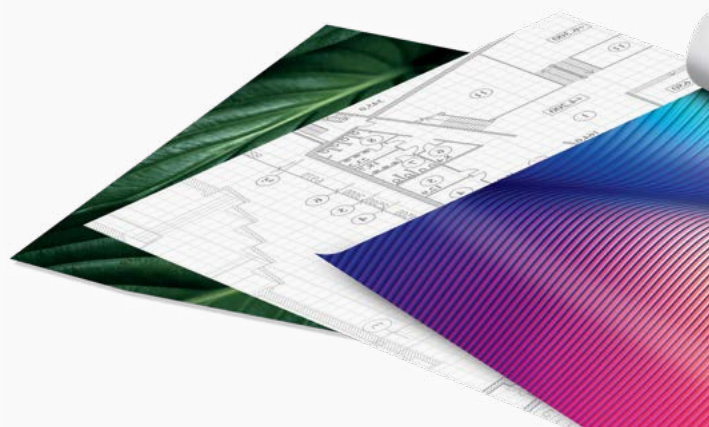
HP Vivid Photo Inks

Formulated to excel on photo, coated, and digital fine art papers, vibrant and durable HP pigment-based inks are designed exclusively for HP DesignJet Z-series printers.

HP large format printing materials

These materials provide consistently outstanding image quality and, with a wide range to choose from, you'll always find the right printing material for the job, or for almost any application. HP premium printing materials are designed to provide best-in-class performance on key attributes like display permanence. For lower cost options, consider HP Everyday or HP Universal printing materials.

Learn more at HPLFMedia.com



HP DesignJet support services

Installation service with network setup

Onsite installation and network setup of your HP DesignJet printer by an HP-authorized service technician.

Next Business Day Onsite Repair

Extend your HP warranty for 2, 3, 4, and 5 years. An HP-authorized service technician typically arrives the next business day. Includes parts, material, and labor.

Post-warranty services

Provides continued protection after your standard HP warranty or HP Care Pack service expires. Offered in 1 and 2-year increments.

Learn more about HP DesignJet Support | Services at hp.com/go/designjetsupport



Technical production printers







HP DesignJet XL-series



HP DesignJet XL-series: New standard of reliability

XL series printing solutions specs comparison		HP DesignJet XL 3800 Printer 	HP DesignJet XL 3600 Multifunction Printer series 
Average printing volume ⁹		300-700 sqm/month	100-300 sqm/month
Printer size/paper size		1603 mm (W) x 690 mm (D) x 1250 mm (H) 36 in	1500 mm (W) x 660 mm (D) x 1310 (H) 36 in
Scan and copy functions		☑	☑
Print speed (line drawings)		6 A1/min 20s for first page out 360 A1/h ¹⁰	3 A1/min 29s for first page out 180 A1/h ¹¹
Scan speed		Color: up to 3 in/sec (7.62 cm/sec) Grayscale: up to 10 in/sec (25.4 cm/sec)	Color: up to 3 in/sec (7.62 cm/sec) Grayscale: up to 10 in/sec (25.4 cm/sec)
Print resolution		Up to 2400 x 1200 optimized dpi	Up to 2400 x 1200 optimized dpi
Scan and copy resolution		Up to 600 dpi	Up to 600 dpi
Scan features		Scan to your network folder, USB drive, printer HDD, and scan to email	Scan to your network folder, USB drive, printer HDD, and scan to email
Print languages (standard)		HP GL/2, HP RTL, PDF, TIFF, CALS, PCL3GUI, URF	HP GL/2, HP RTL, TIFF, JPEG, CALS G4, PCL3GUI, URF
Additional print languages with PostScript SKU or via PostScript upgrade		No	Adobe PostScript® 3; Adobe PDF 1.7, Interpreter with Adobe PDF Print Engine 5
Scan formats (standard)		TIFF, JPEG, PDF	TIFF, JPEG, Multipage TIFF
Additional scan formats with PostScript SKU or via PostScript upgrade		PostScript4 included	PDF, PDF/A, multipage PDFs
Ink cartridges and printheads		Four Original HP Inks (Flex Tech Inks and Permanent and Water-Resistant Black) and six HP printheads	Six Original HP Inks (Bright Office Inks and Permanent and Water-Resistant Black) and one Universal HP printhead
Ink cartridges capacity		500 ml Original HP Ink cartridges	300 ml Original HP Ink cartridges
Number of rolls/maximum roll length		Two automatic spindleless frontloading roll feeds; rolls up to 650 ft (200 m) long	Two automatic spindleless frontloading roll feeds; rolls up to 650 ft (200 m) long
Cut sheet support		No	☑
Compatible media core size		3 in	2 and 3 in
Media handling: output, capacity		Integrated output stacker, up to 100 A1/D-size capacity	Integrated output stacker, up to 100 A1/D-size capacity
Memory		256 GB NVMe™	128 GB (file processing, based on 8 GB RAM), 500 GB Encrypted Hard Disk (AES-256 encrypted)
Interfaces (standard)		Ethernet, Fast Ethernet, Gigabit Ethernet, 10/100/1000Base-T Ethernet (802.3, 802.3u, 802.3ab)	Ethernet, Fast Ethernet, Gigabit Ethernet, 10/100/1000Base-T Ethernet (802.3, 802.3u, 802.3ab)
Folder supported accessories		F40 folder compatibility ¹²	F40 folder compatibility
Security		HP Wolf Enterprise Security	HP Wolf Pro Security
PIN printing		☑	☑
HP Web Jetadmin		☑	☑
HP Mobile Printing		☑	☑
Auto firmware updates		☑	☑
Job accounting functionality		☑	☑
Manage print queues		☑	☑
Drivers		PDF, raster, and HP-GL/2 drivers for Windows; Raster Driver and support for AirPrint for macOS	HPGL/2, raster driver, and PS and PDF drivers for Windows (Postscript printers only) PostScript (PostScript printers only), raster driver and AirPrint support for macOS
HP SmartStream for HP DesignJet printers		☑	☑
HP Click Print solutions		App only	App only
HP DesignJet Partner Link Alert Service		☑	☑
HP Command Center		☑	No
Sustainability impact	On/off scheduler	☑ ^{13,14}	No
	Recycled plastic in hardware	33% ¹⁵	28% ¹⁵
	Packaging	No	No
	Certifications	EPEAT Gold with Climate + ¹⁶ Energy Star ^{®17} UL Ecologo ^{®18}	EPEAT Gold with Climate + ¹⁶ Energy Star ^{®17} UL Ecologo ^{®18}



Graphic printers






HP DesignJet Z-series



HP DesignJet Z-series: High-impact quality

Specifications to help you choose		HP DesignJet Z9+ Pro 64-in Printer 	HP DesignJet Z6 Pro 64-in Printer 
Printer size/paper size		1626 mm (64 in)	1626 mm (64 in)
Customer type		Print service providers, copy shops, photo labs, photo finishers, GIS	GIS map creators/users, retailers for in-store signage printing, copy shops, print service providers
Ink cartridges		9 inks: C, M, Y, mK, pK, G, CR, CG, CB (optional Gloss Enhancer)	6 inks: C, M, Y, mK, pK, CR
Inks		HP Vivid Photo Inks	HP Vivid Photo Inks
Applications		Photos, canvas, backlits, POP graphics/displays, posters, banners, exhibitions, event graphics, maps, and orthophotos with professional photographic quality	Maps, posters, banners, mockups, photos, digital fine art, banners, exhibitions, event graphics, light boxes - film, point of sale, display
Media handling - input		Automatic roll feeding, two roll feed and smart roll switching with multifunction roll accessory	Automatic roll feeding, two roll feed and smart roll switching with multifunction roll accessory
Media handling - output		Media bin, automatic horizontal cutter (cuts all HP Z-series printer qualified media including most canvas), optional 64-in take-up reel	Media bin, automatic horizontal cutter (cuts all HP Z-series printer qualified media including most canvas), optional 64-in take-up reel
Print resolution		Up to 2400 x 1200 optimized dpi	Up to 2400 x 1200 optimized dpi
Print speed		Normal: 29 m ² /hr on coated media Best: 14.1 m ² /hr on glossy media	Fast: 98 m ² /hr on plain media; Normal: 29 m ² /hr on coated media
Adobe PostScript®/PDF ²⁰		Optional	Optional
Drivers		Raster drivers for Windows and macOS PDF driver for Windows and PostScript driver for macOS with optional PostScript/PDF Upgrade Kit	Raster drivers for Windows and macOS PDF driver for Windows and PostScript driver for macOS with optional PostScript/PDF Upgrade Kit
HP Professional PANTONE® Color Emulation		Available with PostScript®/PDF Upgrade Kit ²⁰	Available with PostScript®/PDF Upgrade Kit ²⁰
HP Click Print solutions		App only	App only
Virtual memory and HDD capacity		Virtual memory: 128 GB (based on 4 GB RAM) Self-encrypted HDD capacity: 500 GB	Virtual memory: 128 GB (based on 4 GB RAM) Self-encrypted HDD capacity: 500 GB
HP embedded spectrophotometer		☑	No
Ability to print without RIP		☑	☑
Security	HP Wolf Security level	HP Wolf Pro Security	HP Wolf Pro Security
	Device	HP Secure Boot, whitelisting, signed firmware upgrade, Role Based Access Control, Front Panel Access Lock, disable protocols, SNMPv3	HP Secure Boot, whitelisting, signed firmware upgrade, Role Based Access Control, Front Panel Access Lock, disable protocols, SNMPv3
	Data	IPSec, SSL/TLS, 802.1x, HP Secure Boot, Secure Disk Erase NIST 800-99, X.509 certificate management, disable ports and protocols	IPSec, SSL/TLS, 802.1x, HP Secure Boot, Secure Disk Erase NIST 800-99, X.509 certificate management, disable ports and protocols
	Document	PIN printing	PIN printing

Specifications to help you choose		HP DesignJet Z9+ PostScript Printer series 	HP DesignJet Z6 PostScript Printer series 	HP DesignJet Z6810 Production Printer 
Printer size/paper size		610 mm (24 in) 1118 mm (44 in)	610 mm (24 in) 1118 mm (44 in)	1067 mm (42 in)
Customer type		Photo labs, photo finishers, designers, print service providers	GIS map creators/users, print service providers, and retailers for in-store signage printing	Copy shops, print service providers, photo labs, photo finishers, and GIS
Ink cartridges		9 inks: C, M, Y, mK, pK, G, CR, CG, CB (GE - optional)	6 inks: C, M, Y, mK, pK, CR	8 inks: C, M, Y, mK, pK, IG, IM, CR
Inks		HP Vivid Photo Inks	HP Vivid Photo Inks	HP Vivid Photo Inks
Applications		Photos, canvas, backlits, POP graphics/ displays, posters, banners, maps, and orthophotos with professional photographic quality	Maps and technical drawings, POP graphics/ displays, posters, and banners	Posters, banners, mockups, photos, digital fine art, proofs, displays, POP/POS, light boxes - film, exhibition, event graphics
Media handling - input		One roll feed and manual sheet feed HP DesignJet Z9+dr model: two roll feed and smartroll switching	One roll feed and manual sheet feed HP DesignJet Z6dr model: two roll feed and smart roll switching	One roll feed
Media handling - output		Media bin, automatic horizontal cutter (cuts all HP Z-series printer qualified media including most canvas), vertical trimmer (on Z9+dr model), ²⁾ optional take-up reel on 44-in models	Media bin, automatic horizontal cutter (cuts all HP Z-series printer qualified media including most canvas), vertical trimmer (on Z6dr model), ²⁾ optional take-up reel on 44-in models	Automatic horizontal cutter, media bin, optional take up reel
Print resolution		Up to 2400 x 1200 optimized dpi	Up to 2400 x 1200 optimized dpi	Up to 2400 x 1200 optimized dpi
Print speed		24-in model: Normal: 13.4 m ² /hr on coated media 44-in model: Normal: 17.2 m ² /hr on coated media	24-in model: Normal: 15.2 m ² /hr on coated media 44-in model: Normal: 18.8 m ² /hr on coated media	Normal: 21.9 m ² /hr on coated media
Adobe PostScript®/PDF ²⁰		☑	☑	Optional
Drivers		Raster and PostScript drivers for Windows and macOS PDF driver for Windows 8 and above	Raster and PostScript drivers for Windows and macOS PDF driver for Windows 8 and above	Raster driver for Windows PostScript driver for Windows and macOS with optional PostScript/PDF Upgrade Kit
HP Professional PANTONE® Color Emulation		☑	☑	Available with PostScript®/PDF Upgrade Kit ²⁰
HP Click Print solutions		App only	App only	App only
Virtual memory and HDD capacity		Virtual memory: 128 GB (based on 4 GB RAM) Self-encrypted HDD capacity: 500 GB	Virtual memory: 128 GB (based on 4 GB RAM) Self-encrypted HDD capacity: 500 GB	Virtual memory: 128 GB (based on 4 GB RAM) Self-encrypted HDD capacity: 500 GB
HP embedded spectrophotometer		☑	No	☑
Ability to print without RIP		☑	☑	☑
Security	HP Wolf Security level	HP Wolf Pro Security	HP Wolf Pro Security	No
	Device	HP Secure Boot, whitelisting, signed firmware upgrade, Role Based Access Control, Front Panel Access Lock, disable protocols, SNMPv3	HP Secure Boot, whitelisting, signed firmware upgrade, Role Based Access Control, Front Panel Access Lock, disable protocols, SNMPv3	Control Panel Access Lock, disable protocols
	Data	IPSec compatibility, TLS/SSL, IPv4 and IPv6 compatibility, CA/JD certificates, 802.1x compatibility, Self-encrypted HDD, secure file and disk erase	SNMPv3 compatibility, IPSec compatibility, TLS/SSL, IPv4 and IPv6 compatibility, CA/JD certificates, 802.1x compatibility, Self-encrypted HDD, secure file and disk erase	SNMPv3 compatibility, IPSec, secure disk, file erase, certificates management, and SSL
	Document	PIN printing	PIN printing	No

Technical printers

High-impact accuracy



These printers are ideal for architectural, engineering, and construction companies (AEC) and geographic information system (GIS) firms. Also, MCAD professional users and workgroups and government agencies. If you need to print, scan, or copy maps, technical drawings, or renderings with precise, accurate line quality and crisp text, be sure to review the specifications on the following pages.

HP DesignJet T-series



HP DesignJet T-series: High-impact accuracy

T series printing solutions specs comparison		HP DesignJet T1700 Printer series
		
Average printing volume ⁹	T1700dr: 300 to 600 A1/month; T1700: up to 300 A1/month	
Printer size /paper size	44 in (1118 mm)/B0+	
Scan and copy functions	No	
Print speed (line drawings)	26 sec/page on A1/D, 116 A1/D prints/hour ¹¹	
Scan speed	No	
Print resolution	Up to 2400 x 1200 optimized dpi	
Scan and copy resolution	No	
Scan features	No	
Print languages (standard)	HP GL/2, TIFF, JPEG, URF, CALS G4, PCL3GUI	
Additional print languages with PostScript SKU or via PostScript upgrade	PostScript® printer: Adobe PostScript® 3, Adobe PDF 1.7 ext 3, HP-GL/2, TIFF, JPEG, URF, CALS G4	
Scan formats (standard)	No	
Additional scan formats with PostScript SKU or via PostScript upgrade	No	
Ink cartridges and printheads	Six Original HP Inks and three Universal HP printheads	
Ink cartridges capacity	130 and 300 ml Original HP Ink cartridges	
Number of rolls/maximum roll length	One (T1700)/Two (T1700dr) automatic roll feeds; rolls up to 300 ft (91.4 m) long	
Cut sheet support	☑	
Compatible media core size	2 in; 3 in only with optional accessory	
Media handling: output, capacity	Integrated media bin	
Memory	128 GB (based on 4 GB DDR3 RAM) virtual 500 GB SED hard disk	
Interfaces (standard)	Ethernet, Fast Ethernet, Gigabit Ethernet, 10/100/1000Base-T Ethernet (802.3, 802.3u, 802.3ab)	
Folder supported accessories	No	
Security	HP Wolf Pro Security	
HP Web Jetadmin	☑	
HP Mobile Printing	☑	
Auto firmware updates	☑	
Job accounting functionality	☑	
Manage print queues	☑	
Drivers	Raster and HPGL/2 drivers for Windows + PostScript and PDF Windows drivers (PostScript printers only) and raster driver and AirPrint support for macOS + PostScript driver (PostScript printers only)	
HP SmartStream for HP DesignJet printers	☑	
HP Click Print solutions	App only	
HP DesignJet Partner Link Alert Service	☑	
Sustainability impact	On/off scheduler	No
	Recycled plastic in hardware	30% ¹⁵
	Packaging	No
	Certifications	EPEAT Gold with Climate + ¹⁶ Energy Star ¹⁷

T series printing solutions specs comparison		HP DesignJet T2600 Multifunction Printer series 	HP DesignJet T1600 Printer series 
Average printing volume ⁹		T2600dr: 300 to 600 A1/month; T2600: up to 300 A1/month	T1600dr: 300 to 600 A1/month; T1600: up to 300 A1/month
Printer size /paper size		36 in (914 mm)/A0	36 in (914 mm)/A0
Scan and copy functions		<input checked="" type="checkbox"/>	No
Print speed (line drawings)		19.3 sec/page on A1/D, 180 A1/D prints/hour ¹¹	19.3 sec/page on A1/D, 180 A1/D prints A1/D prints/hour ¹¹
Scan speed		Color: up to 3 in/sec (7.62 cm/sec) Grayscale: up to 10 in/sec (25.4 cm/sec)	No
Print resolution		Up to 2400 x 1200 optimized dpi	Up to 2400 x 1200 optimized dpi
Scan and copy resolution		Up to 600 dpi	No
Scan features		Scan to your network folder, USB drive, printer HDD, and scan to email	No
Print languages (standard)		HP GL/2, HP RTL, TIFF, JPEG, CALS G4, PCL3GUI, URF	HP GL/2, HP RTL, TIFF, JPEG, CALS G4, PCL3GUI, URF
Additional print languages with PostScript SKU or via PostScript upgrade		Adobe PostScript® 3, Adobe PDF 1.7, Interpreter with Adobe PDF Print Engine 5	Adobe PostScript® 3, Adobe PDF 1.7, Interpreter with Adobe PDF Print Engine 5
Scan formats (standard)		TIFF, JPEG, Multipage TIFF	No
Additional scan formats with PostScript SKU or via PostScript upgrade		PDF, PDF/A, Multipage PDF	No
Ink cartridges and printheads		Six Original HP Inks (Bright Office Inks and Permanent and Water-Resistant Black) and one Universal HP printhead	Six Original HP Inks and one Universal HP printhead
Ink cartridges capacity		130 and 300 ml Original HP Ink cartridges	130 and 300 ml Original HP Ink cartridges
Number of rolls/maximum roll length		T2600dr: Two automatic frontloading roll feeds; rolls up to 300 ft (91.4 m) long T2600: One automatic frontloading roll feed; rolls up to 300 ft (91.4 m) long	T1600dr: Two automatic frontloading roll feeds; rolls up to 300 ft (91.4 m) long T1600: One automatic frontloading roll feed; rolls up to 300 ft (91.4 m) long
Cut sheet support		<input checked="" type="checkbox"/>	<input checked="" type="checkbox"/>
Compatible media core size		2 in; 3 in only with optional accessory	2 in; 3 in only with optional accessory
Media handling: output, capacity		Integrated output stacker, up to 100 A1/D-size capacity and integrated media bin	Integrated output stacker, up to 100 A1/D-size capacity and integrated media bin
Memory		128 GB (file processing, based on 8 GB RAM), 500 GB Encrypted Hard Disk (AES-256 encrypted)	128 GB (file processing, based on 4 GB RAM), 500 GB Encrypted Hard Disk (AES-256 encrypted)
Interfaces (standard)		Ethernet, Fast Ethernet, Gigabit Ethernet, 10/100/1000Base-T Ethernet (802.3, 802.3u, 802.3ab)	Ethernet, Fast Ethernet, Gigabit Ethernet, 10/100/1000Base-T Ethernet (802.3, 802.3u, 802.3ab)
Folder supported accessories		No	No
Security		HP Wolf Pro Security	HP Wolf Pro Security
HP Web Jetadmin		<input checked="" type="checkbox"/>	<input checked="" type="checkbox"/>
HP Mobile Printing		<input checked="" type="checkbox"/>	<input checked="" type="checkbox"/>
Auto firmware updates		<input checked="" type="checkbox"/>	<input checked="" type="checkbox"/>
Job accounting functionality		<input checked="" type="checkbox"/>	<input checked="" type="checkbox"/>
Manage print queues		<input checked="" type="checkbox"/>	<input checked="" type="checkbox"/>
Drivers		Raster and HPGL/2 drivers for Windows + PostScript and PDF Windows drivers (PostScript printers only) and raster driver and AirPrint support for macOS + PostScript driver (PostScript printers only)	Raster and HPGL/2 drivers for Windows + PostScript and PDF Windows drivers (PostScript printers only) and raster driver and AirPrint support for macOS + PostScript driver (PostScript printers only)
HP SmartStream for HP DesignJet printers		<input checked="" type="checkbox"/>	<input checked="" type="checkbox"/>
HP Click Print solutions		App only	App only
HP DesignJet Partner Link Alert Service		<input checked="" type="checkbox"/>	<input checked="" type="checkbox"/>
Sustainability impact	On/off scheduler	No	No
	Recycled plastic in hardware	10% ¹⁵	10% ¹⁵
	Packaging	No	No
	Certifications	EPEAT Gold with Climate + ¹⁶ Energy Star ^{#17}	EPEAT Gold with Climate + ¹⁶ Energy Star ^{#17}

HP DesignJet T-series: High-impact accuracy

T series printing solutions specs comparison		HP DesignJet T950 Multifunction Printer 	HP DesignJet T950 Printer 
Average printing volume ⁹		200 to 300 A1/month	200 to 300 A1/month
Printer size/paper size		914 mm (36 in)/A0	914 mm (36 in)/A0
Scan and copy functions		<input checked="" type="checkbox"/>	No
Print speed (line drawings)		21 sec/page on A1, 120 A1 prints/hour ¹¹	21 sec/page on A1, 120 A1 prints/hour ¹¹
Scan speed		Color: up to 1.5 in/sec Greyscale: up to 4.5 in/sec	No
Print resolution		Up to 2400 x 1200 optimized dpi	Up to 2400 x 1200 optimized dpi
Scan and copy resolution		Up to 600 dpi	No
Scan features		Scan to network folder, USB drive, scan to email and scan to cloud (through HP app)	No
Print languages (standard)		PCL3GUI, HP GL/2, HP RTL, JPEG, CALS G4, URF, TIFF, PDF	PCL3GUI, HP GL/2, HP RTL, JPEG, CALS G4, URF, TIFF
Additional print languages with PostScript SKU or via PostScript upgrade		No	No
Scan formats (standard)		PDF, JPEG, TIFF	No
Additional scan formats with PostScript SKU or via PostScript upgrade		No	No
Ink cartridges and printheads		Four Original HP Inks and one Universal HP printhead	Four Original HP Inks and one Universal HP printhead
Ink cartridges capacity		130 and 300 ml Original HP Inkcartridges	130 and 300 ml Original HP Ink cartridges
Number of rolls/maximum roll length		One roll feed; roll up to 300 ft (91 m) long	One roll feed; roll up to 300 ft (91 m) long
Cut sheet support/tray capacity		<input checked="" type="checkbox"/> 100 A3	<input checked="" type="checkbox"/> 100 A3
Compatible media core size		2 in	2 in
Media handling: output, capacity		Stacker (up to 40 A1), Sheet organizer (up to 50 A3)	Stacker (up to 40 A1), Sheet organizer (up to 50 A3)
Memory		2 GB	1 GB
Interfaces (standard)		Gigabit Ethernet (1000Base-T), Wi-Fi	Gigabit Ethernet (1000Base-T), Wi-Fi
Folder supported accessories		No	No
Security		HP Wolf Pro Security	HP Wolf Pro Security
PIN printing		No	No
HP Web Jetadmin		<input checked="" type="checkbox"/>	<input checked="" type="checkbox"/>
HP Mobile Printing		<input checked="" type="checkbox"/>	<input checked="" type="checkbox"/>
Auto firmware updates		<input checked="" type="checkbox"/>	<input checked="" type="checkbox"/>
Job accounting functionality		No	No
Manage print queues		Job reprint	Job reprint
Drivers		HP-GL/2, raster drivers for Windows, HP Click Driver for Windows 11 Raster driver and AirPrint support for macOS	HP-GL/2, raster drivers for Windows, HP Click Driver for Windows 11 Raster driver and AirPrint support for macOS
HP SmartStream for HP DesignJet printers		No	No
HP Click Print solutions		App & Driver ²²	App & Driver ²²
HP DesignJet Partner Link Alert Service		<input checked="" type="checkbox"/>	<input checked="" type="checkbox"/>
Sustainability impact	On/off scheduler	<input checked="" type="checkbox"/> ¹⁴	<input checked="" type="checkbox"/> ¹⁴
	Recycled plastic in hardware	35% ¹⁵	35% ¹⁵
	Packaging	Hybrid end-caps & paper bags	Hybrid end-caps & paper bags
	Certifications	EPEAT Gold with Climate ⁺¹⁶ Energy Star ¹⁷ UL Ecologo ¹⁸	EPEAT Gold with Climate ⁺¹⁶ Energy Star ¹⁷ UL Ecologo ¹⁸

T series printing solutions specs comparison		HP DesignJet T850 Multifunction Printer 	HP DesignJet T850 Printer 
Average printing volume ⁹		150-200 A1/month	150 to 200 A1/month
Printer size/paper size		914 mm (36 in)/A0	914 mm (36 in)/A0
Scan and copy functions		<input checked="" type="checkbox"/>	No
Print speed (line drawings)		25 sec/page on A1, 90 A1 prints/hour ¹¹	25 sec/page on A1, 90 A1 prints/hour ¹¹
Scan speed		Color: up to 1.5 in/sec Greyscale: up to 4.5 in/sec	No
Print resolution		Up to 2400 x 1200 optimized dpi	Up to 2400 x 1200 optimized dpi
Scan and copy resolution		up to 600 dpi	No
Scan features		Scan to network folder, USB drive, scan to email and scan to cloud (through HP app)	No
Print languages (standard)		PCL3GUI, HP GL/2, HP RTL, JPEG, CALS G4, URF, TIFF, PDF	PCL3GUI, HP GL/2, HP RTL, JPEG, CALS G4, URF, TIFF
Additional print languages with PostScript SKU or via PostScript upgrade		No	No
Scan formats (standard)		PDF, JPEG, TIFF	No
Additional scan formats with PostScript SKU or via PostScript upgrade		No	No
Ink cartridges and printheads		Four Original HP Inks and one Universal HP printhead	Four Original HP Inks and one Universal HP printhead
Ink cartridges capacity		130 and 300 ml Original HP Ink cartridges	130 and 300 ml Original HP Ink cartridges
Number of rolls/maximum roll length		One roll feed; roll up to 150 ft (45.7 m) long	One roll feed; roll up to 150 ft (45.7 m) long
Cut sheet support/tray capacity		<input checked="" type="checkbox"/> 50 A3	<input checked="" type="checkbox"/> 50 A3
Compatible media core size		2 in	2 in
Media handling: output, capacity		Stand with output bin	Stand with output bin
Memory		2 GB	1 GB
Interfaces (standard)		Gigabit Ethernet (1000Base-T), Wi-Fi	Gigabit Ethernet (1000Base-T), Wi-Fi
Folder supported accessories		No	No
Security		HP Wolf Pro Security	HP Wolf Pro Security
PIN printing		No	No
HP Web Jetadmin		<input checked="" type="checkbox"/>	<input checked="" type="checkbox"/>
HP Mobile Printing		<input checked="" type="checkbox"/>	<input checked="" type="checkbox"/>
Auto firmware updates		<input checked="" type="checkbox"/>	<input checked="" type="checkbox"/>
Job accounting functionality		No	No
Manage print queues		No	No
Drivers		HP-GL/2, raster drivers for Windows, HP Click Driver for Windows 11 Raster driver and AirPrint support for macOS	HP-GL/2, raster drivers for Windows, HP Click Driver for Windows 11 Raster driver and AirPrint support for macOS
HP SmartStream for HP DesignJet printers		No	No
HP Click Print solutions		App & Driver ²²	App & Driver ²²
HP DesignJet Partner Link Alert Service		<input checked="" type="checkbox"/>	<input checked="" type="checkbox"/>
Sustainability impact	On/off scheduler	<input checked="" type="checkbox"/> ¹⁴	<input checked="" type="checkbox"/> ¹⁴
	Recycled plastic in hardware	35% ¹⁵	35% ¹⁵
	Packaging	Hybrid end-caps & paper bags	Hybrid end-caps & paper bags
	Certifications	EPEAT Gold with Climate + ¹⁶ Energy Star ¹⁷ UL Ecologo ¹⁸	EPEAT Gold with Climate + ¹⁶ Energy Star ¹⁷ UL Ecologo ¹⁸

HP DesignJet T-series: High-impact accuracy

T series printing solutions specs comparison		HP DesignJet T830 Multifunction Printer 	HP DesignJet Studio Printer series 
Average printing volume ⁹		180 A1/month	120 to 150 A1/month
Printer size/paper size		24 in (610 mm)/A1	24 in (610 mm)/A1 36 in (914 mm)/A1
Scan and copy functions		<input checked="" type="checkbox"/>	No
Print speed (line drawings)		26 sec/page on A1/D, 81 A1/D prints/hour ¹¹	36 in: 25 sec/page on A1/D; 82 A1/D prints/hour ²³ 24 in: 26 sec/page on A1/D; 81 A1/D prints/hour ²³ T630: 36 in and 24 in: 30 sec/page on A1/D; 76 A1/D prints/hour ²³
Scan speed		Color: up to 3.81 cm/sec (1.5 in/sec) Grayscale: up to 11.43 cm/sec (4.5 in/sec)	No
Print resolution		Up to 2400 x 1200 optimized dpi	Up to 2400 x 1200 optimized dpi
Scan and copy resolution		Up to 600 dpi	No
Scan features		Scan to email, scan to cloud (through HP Smart app), network, USB, computer, mobile	No
Print languages (standard)		TIFF, JPEG, CALS G4, HP PCL 3, GUI, HP GL/2, HP RTL, URF, PCL3GUI	HP GL/2, HP RTL, JPEG, CALS G4, URF
Additional print languages with PostScript SKU or via PostScript upgrade		No	No
Scan formats (standard)		JPEG, TIFF, PDF	No
Additional scan formats with PostScript SKU or via PostScript upgrade		No	No
Ink cartridges and printheads		Four Original HP Inks and one Universal HP printhead	Four Original HP Inks and one HP printhead (C,M,Y,K)
Ink cartridges capacity		130 and 300ml Original HP ink cartridges 40ml and 69ml cartridges in select countries	80 ml and 38 ml matte black; 29 ml yellow, magenta, and cyan Original HP Ink cartridges
Number of rolls/maximum roll length		One roll feed; rolls up to 150 ft (45.7 m) long	One roll feed; rolls up to 150 ft (45.7 m) long
Cut sheet support/tray capacity		<input checked="" type="checkbox"/> 50 A3	<input checked="" type="checkbox"/> 50 A3
Compatible media core size		2 in	2 in
Media handling: output, capacity		Integrated media bin	Integrated and retractable media bin
Memory		1 GB	1 GB
Interfaces (standard)		Gigabit Ethernet (1000Base-T); Wi-Fi 802.11b/g/n; Wi-Fi Direct	Gigabit Ethernet (1000Base-T), Hi-Speed USB 2.0, Wi-Fi 802.11
Folder supported accessories		No	No
Security		HP Wolf Pro Security	HP Wolf Essential Security
PIN printing		No	No
HP Web Jetadmin		<input checked="" type="checkbox"/>	<input checked="" type="checkbox"/>
HP Mobile Printing		<input checked="" type="checkbox"/>	<input checked="" type="checkbox"/>
Auto firmware updates		<input checked="" type="checkbox"/>	<input checked="" type="checkbox"/>
Job accounting functionality		No	No
Manage print queues		No	No
Drivers		HP-GL/2, raster drivers for Windows Raster driver and AirPrint support for macOS	HP-GL/2, raster driver for Windows, HP Click Driver for Windows 11 Raster driver for macOS
HP SmartStream for HP DesignJet printers		No	No
HP Click Print solutions		App only	App & Driver ²²
HP DesignJet Partner Link Alert Service		No	No
Sustainability impact	On/off scheduler	No	<input checked="" type="checkbox"/> ¹⁴
	Recycled plastic in hardware	No	No
	Packaging	No	No
	Certifications	EPEAT Silver ¹⁶ Energy Star ¹⁷	No

T series printing solutions specs comparison		HP DesignJet T600 Series 2025 Edition 	HP DesignJet T200 printer series 2025 edition 
Average printing volume ⁹		1120 to 150 A1/month	0-100 A1/month
Printer size/paper size		24 in (610 mm)/A1 36 in (914 mm)/A1	24 in (610 mm)
Scan and copy functions		No	No
Print speed (line drawings)		T650: 36 in: 25 sec/page on A1/D; 82 A1/D prints/hour ²³ 24 in: 26 sec/page on A1/D; 81 A1/D prints/hour ²³ T630: 36 in and 24 in: 30 sec/page on A1/D; 76 A1/D prints/hour ²³	T250: 30 sec/page on A1/D; 76 A/D1 prints/hour ²³ T230: 35 sec/page on A1/D; 68 A/D1 prints/hour ²³ T210: 45 sec/page on A1/D; 59 A/D1 prints/hour ²³
Scan speed		No	No
Print resolution		Up to 2400 x 1200 optimized dpi	Up to 2400 x 1200 optimized dpi
Scan and copy resolution		No	No
Scan features		No	No
Print languages (standard)		HP GL/2, HP RTL, JPEG, CALS G4, URF	JPEG, URF
Additional print languages with PostScript SKU or via PostScript upgrade		No	No
Scan formats (standard)		No	No
Additional scan formats with PostScript SKU or via PostScript upgrade		No	No
Ink cartridges and printheads		Four Original HP Inks and one HP printhead (C,M,Y,K)	Four Original HP Inks and one HP printhead (C,M,Y,K)
Ink cartridges capacity		80 ml and 38 ml matte black; 29 ml yellow, magenta, and cyan Original HP Ink cartridges	80 ml and 38 ml matte black; 29 ml yellow, magenta, and cyan Original HP Ink cartridges
Number of rolls/maximum roll length		One roll feed; rolls up to 150 ft (45.7 m) long	One roll feed; rolls up to 150 ft (45.7 m) long
Cut sheet support/tray capacity		✓ 50 A3	✓ 50 A3
Compatible media core size		2 in	2 in
Media handling: output, capacity		Integrated media bin	Optional media bin
Memory		1 GB	512 GB
Interfaces (standard)		Gigabit Ethernet (1000Base-T), Hi-Speed USB 2.0, Wi-Fi 802.11	Gigabit Ethernet (1000Base-T), Hi-Speed USB 2.0, Wi-Fi 802.11
Folder supported accessories		No	No
Security		HP Wolf Essential Security	HP Wolf Essential Security
PIN printing		No	No
HP Web Jetadmin		✓	No
HP Mobile Printing		✓	✓
Auto firmware updates		✓	✓
Job accounting functionality		No	No
Manage print queues		No	No
Drivers		HP-GL/2, raster driver for Windows, HP Click Driver for Windows 11 Raster driver for macOS	Raster driver for Windows, HP Click Driver for Windows 11 Raster driver for macOS
HP SmartStream for HP DesignJet printers		No	No
HP Click Print solutions		App & Driver ²²	App & Driver ²²
HP DesignJet Partner Link Alert Service		No	No
Sustainability impact	On/off scheduler	✓ ¹⁴	✓ ¹⁴
	Recycled plastic in hardware	40% ¹⁵	40% ¹⁵
	Packaging	Molded fiber endcaps & paper bags	Molded fiber endcaps & paper bags
	Certifications	EPEAT Gold with Climate + ¹⁶ Energy Star ^{®17} UL Ecologo ^{®18}	EPEAT Gold with Climate + ¹⁶ Energy Star ^{®17} UL Ecologo ^{®18}

The impact of advanced technology



High-definition Nozzle Architecture (HDNA) and HP Dual Drop Technology

Provides twice the nozzle density of previous HP DesignJet Z-series printheads. Using dual drop technology, high-definition HP printheads produce a combination of large drop sizes (7 pL) for robust area fills at fast speeds, while small drop sizes (3 pL) reduce visible grain—eliminating the need for light-colored inks.



Adobe PDF Print Engine²⁰

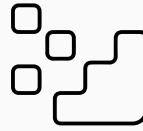
This high-speed, high-fidelity print platform renders PDF job content, converting graphics, text, and images to rasters for driving HP DesignJet large format printers. It provides tile parallel processing, extended spot color handling, and the smoothest shades ever.

It's a simple fact: We grow when you grow. We prosper when you do. Our relationship with you is of major importance to us. So we put our heart and soul, our brains, and imagination into developing some of the world's most advanced printing technology. It's another way HP DesignJet large format printers can help you make the kind of impact that sets your business apart.



HP Embedded Spectrophotometer

Integrated with some HP DesignJet printers, this precision instrument provides a high degree of color accuracy and color consistency from the first print to the last one—and from printer to printer—regardless of paper types.



HP Pixel Control

This breakthrough moves from building color output, ink layer by ink layer, to directly choosing color at the pixel level. This results in smoother transitions, richer and deeper colors, accurate spot colors, and sharper details.



HP professional PANTONE® emulation

Matches colors as closely as possible to the original PANTONE® colors by taking into account your printer and paper type. Designed to produce emulations similar to those set up manually by prepress professionals.



Integrated vertical trimmer²¹

The industry's first integrated vertical trimmer, this inline finishing option lets you cut post-processing labor time by up to 20%.



HP Optical Media Advance Sensor (OMAS)

Enables you to print at top speeds and still get outstanding results. This breakthrough technology improves paper-advance control and accuracy, so the printer can print at higher speeds across multiple environmental conditions without impairing image quality.



HP Double Swath Technology

Unique to HP, this advanced technology provides breakthrough speed and performance thanks to two sets of printheads, creating a wide print swath and high firing frequency.



Adobe PostScript®

Enables you to print any document—text, graphics, images, and color—from any computing platform to any supported device, at the highest quality possible. Delivers optimized quality for PANTONE® color emulation, and eliminates errors, printing complex PDFs with different layers.



Designed with the environment in mind

Most HP DesignJet large format printers are ENERGY STAR® certified, which means they meet strict energy efficiency guidelines without sacrificing performance. Most are also EPEAT® registered¹⁶, which means they have a reduced environmental impact across their lifecycle.

Learn more at hp.com/sustainability

Defend your devices, data, and documents



Imaging and printing vulnerability points



Threats to your device

Control panel

Users can exploit device settings and functions

Default password

Printers can come with simple default passwords that can be easily compromised

BIOS and firmware

Compromised firmware can open a device and network to attack

Critical gaps can occur at multiple points within your imaging and printing environment. Once you understand these vulnerabilities, you can more easily reduce the risks.



Threat to your data

Data at rest

Printers store sensitive data that can be at risk

Capture

Unsecured MFPs can be used to send scans anywhere

Data in transit

Jobs can be intercepted as they travel to/from a device



Threats to your documents

Output tray

Abandoned documents can fall into the wrong hands

Ports and protocols

Unsecured ports (USB or network) or protocols (FTP or Telnet) put devices at risk

Management

Undetected security gaps put data devices

Feature availability and related performance varies by printer, and may be optional. See individual product data sheets for more information at hp.com/go/designjet

Exceptional protection. Simple and secure.

HP Wolf Security now extends to HP's large format DesignJet and PageWide printers



To help print businesses like yours address future vulnerabilities and risks, HP Wolf Security delivers integrated endpoint protection and resiliency that starts at the hardware level and extends across software.

It's a breed of endpoint security, rooted in zero trust principles, that is continually evolving to help you stay ahead of modern threats.

Improve your security posture—with ease

While HP Wolf Security offers exceptional protection, it also enables systems to defend themselves and self-heal. Deploy and manage systems easily without compromising the breadth and depth of your security coverage.



Protect your confidential business data with our most advanced security technology for large format printers, now with HP Wolf Security

Confidently connect your printer to your secure network without compromising your protection.

Enhance your performances by helping customers and end-users achieve their optimum capability in a secure environment.

Secure your large format printers with top-tier features from day one.

Our solutions reduce vulnerabilities, enhance resiliency, protect sensitive information, and ensure effortless compliance.

Three different levels of protection

HP DesignJet printers with HP Wolf Security have varying degrees of protection already built into them. By purchasing an HP Wolf secure printer, you are sure to have the appropriate level of security for your needs.



HP Wolf Essential Security²⁴

Lay a secure foundation with hardware-powered protection.

HP Wolf Pro Security²⁵

Stay ahead of evolving security threats and keep your users productive.

HP Wolf Enterprise Security²⁶

Protect your reputation and your confidential data with proactive measures that prevent cyber-threats.

Sustainable Impact

Following the goal to be the most sustainable and just technology company, each year we are placing our effort to enhance sustainability features at every stage of a printer's lifecycle – from the materials we choose, to the energy consumption, to an effective waste management.

Before use

Thoughtfully selected materials



Our DesignJet and PWXL printers are designed with at least 10% post-consumer recycled plastic¹⁵. Several large format printing products launched in 2023 are made using at least 33% post-consumer recycled plastics, including the DesignJet XL3800, T850 and T950, and Smart Tank ink cartridge.¹⁵



Launched in 2024, the HP DesignJet T200 and T600 Series 2025 Edition is made with at least 40% recycled plastic¹⁵ and will be the First HP Large format printer containing certified recycled metal.²⁷



All HP branded paper is responsibly sourced (preferably FSC[®]-certified²⁸) and sustainably managed or derived from recycled sources.

Refining packaging with fiber-based material

Our printer packaging has made significant improvement toward sustainability.

In 2023, the redesigned packaging for the T850 series, which combined fiber-based materials with expanded polystyrene (EPS), reduced EPS usage by 69% compared to the previous T730 model.²⁹

With the HP DesignJet T200 and T600 Series 2025 Edition, we've fully eliminated expanded polystyrene. With the new molded fiber packaging and the removal of most plastic bags, we've reduced plastic waste by more than half.³⁰



During use

Energy-saving

HP DesignJet T850 and T950 large format printers as well as the HP DesignJet T200 and T600 Series 2025 Edition feature the innovative Energy Scheduler, which helps to reduce energy use by up to 65% through automatic ON/OFF scheduling.³¹

Forest First

With every page you print, HP invests in helping to protect, manage, and restore forests.³²

With WWF's help, we calculate the paper footprint for millions of HP printers and commit to giving back to forests in equal measure or more by 2030.



Protect



Manage



Restore



Certifications

HP's new Flex Tech Inks are the first inks in the technical large format printing market to attain UL ECOLOGO® Certification.¹⁸

Furthermore, the HP Vivid Photo inks of the HP DesignJet Z-series printers have also achieved GREENGUARD Gold certification.³³

And every new HP DesignJet product released since 2023—including DesignJet XL3800, T850 and T950 series, DesignJet Smart Tank T858 and T908 MFP, and the HP DesignJet T200 and T600 Series 2025 Edition—is ENERGY STAR® certified¹⁷ and EPEAT® registered¹⁶ (including EPEAT Gold in the United States).



After use

Free recycling with HP Planet Partners³⁴

HP Planet Partners manages a broad network of HP third-party recycling vendors.

60+

Countries and territories where HP offers ink and toner recycling.³⁴



1 billion+

print cartridges returned to the HP Planet Partners recycling program as of December 31, 2022.³⁵



Making an impact on growth



You have big goals and dreams for your business.



1. Based on 36 in Wi-Fi® integrated MFPs available in the market as of September, 2015.
2. Applicable to the HP DesignJet XL 3600 Multifunction Printer series. Advanced embedded security features are based on HP review of 2019 published embedded security features of competitive printers, as of February 2019.
3. Available for Windows 7 and later, and for macOS 10 and later. The last release supporting Windows 7 and 8 was in 2021.
4. Windows 11 is a trademark of the Microsoft group of companies.
5. Based on a competitive comparison of the HP Printer Driver and comparable competitive printer drivers that represent the majority of the market share as of 2024 according to IDC. HP Click Driver performs all steps in one: providing a real-print preview, PDF error detection with warnings, and print settings all together, unlike competitors, which are not integrated. The comparison was performed by Sogeti in July 2024.
6. Using HP SmartStream software, job preparation and processing can be completed in 50% of the time. Based on testing commissioned by HP and performed by Sogeti in September, 2020 comparing select competitor printers that represent the majority market share of LED printers worldwide as of 2019 according to IDC, and software to HP SmartStream software, measuring the time required to extract pages from a 63-page document and print them using several printers compared with using equivalent software programs.
7. HP Flex Tech Inks must be used with HP DesignJet XL 3800, HP DesignJet T850, and HP DesignJet T950 printers.
8. HP Bright Office Inks must be used with HP DesignJet T1x0, T2x0, T6x0, T7x0, T830, T920, T930, T1x00 and T2x00 printers.
9. Recommended printing volumes based on an average user, but not defining the device's printing capacity.
10. Based on comparison of published speed specifications commissioned by HP and performed by Sogeti in February 2023. HP DesignJet XL 3800 top speed of 6 color D pages per minute compared to top speed specifications of mono and color printers from different manufacturers comparable in terms of price range, speed and market relevance based on their worldwide market share as of February 2023 according to IDC. Further details available upon request.
11. Mechanical printing time. Printed in Fast mode using Original HP Inks.
12. HP F40 Folder compatibility is available only in the EMEA region.
13. Incorporation of the scheduler is expected to be implemented after November 2024. Integration of an auto on/off scheduler allowing users to automatically set up the turn on or off at predetermined times. This can be set up to align with specific usage patterns, and energy-saving goals resulting in helping lowering energy use.
14. Applicable to select HP printers. Integration of an auto on/off scheduler allowing users to automatically set up the turn on or off at predetermined times. This can be set up to align with specific usage patterns, and energy-saving goals resulting in helping lowering energy use.
15. Applicable to select HP printers. Contains at least this percentage of recycled plastic. Recycled plastic is expressed as a percentage of the total weight plastic. Post-consumer recycled content is based on the definition set in the EPEAT standard for imaging equipment, IEEE 1680.2.
16. Applicable to select HP printers. EPEAT registered where applicable/supported. EPEAT registration varies by country. See epeat.net for registration status by country.
17. Applicable to select HP printers. ENERGY STAR® and ENERGY STAR® mark are registered trademarks owned by U.S Environmental Protection Agency. See energystar.gov for certification status by country.
18. Applicable to select HP ink. UL ECOLOGO® Certified HP 712, 738, 768 DesignJet Inks and 863, 864, 865, 866, 867, 869, 870 PageWide XL Inks meet a range of stringent human health and environmental considerations. For certifications, see www.ul.com/EL and www.ul.com/gg.
19. Maximum rate of output for color image is 100% color coverage. Printed on maximum roll size, with Original HP Vivid Photo Inks.
20. May require purchase of PostScript® models or optional HP DesignJet PostScript®/PDF Upgrade Kit.
21. Vertical trimmer and dual rolls included with the HP DesignJet Z9+dr 44 in and Z6dr 44 in PostScript® printers with V-Trimmer only. Up to 20% reduction in post-processing labor time based on internal HP testing compared to HP DesignJet Z9+dr and Z6dr series printers without built-in vertical trimmer.
22. HP Click driver available for Windows 11.
23. Mechanical printing time. Printed in Fast mode with Economode on, using HP Bright White Inkjet Paper (bond) and Original HP Inks. Actual performance may vary based on a variety of conditions, including but not limited to network configuration.
24. HP Wolf Essential Security includes various HP security features and is available on HP DesignJet T200/T600 Series, HP DesignJet Studio series, HP DesignJet T200/T600 Series 2025 Edition printers. See product details for included features.
25. HP Wolf Pro Security includes various HP security features and is available on HP DesignJet T850/T950, HP DesignJet Smart Tank T858/T908/T918, HP DesignJet T1600/T2600, HP DesignJet T1700, HP DesignJet Z6/Z9, HP DesignJet Z6pro/Z9+pro, HP DesignJet XL3600 printers, and HP PageWide X and HP PageWide XL Pro printers. See product details for included features.
26. HP Wolf Enterprise Security includes various HP security features and is available on HP DesignJet XL3800. See product details for included security features.
27. Incorporation of a minimum of 5% of recycled metal, expected to be implemented in units manufactured after April 1st, 2025. Recycled metal is expressed as a percentage of the total weight of the metal according to ISO 14021 definitions for metal. This number is the minimum and may vary slightly due to manufacturing processes and material availability.
28. HP has a preference for offering Forest Steward Council® (FSC®)-certified papers that are sourced from FSC®-certified forests and other controlled sources. HP trademark license code FSC®-C017543, see fsc.org. Sylvamo Corporation trademark license codes FSC®-C168336 (North America), FSC®-C101994 (Latin America), FSC®-C101994, FSC®-C084255, and FSC®-CO22974 (Europe and Asia). Not all FSC®-certified products are available in all regions, look for logo on pack.
29. The HP DesignJet T850 series uses a combination of fiber-based materials and expanded polystyrene (EPS). The reduction in EPS is expressed as a percentage of the total plastic weight in the packaging.
30. The HP DesignJet T200/T600 2025 Edition plotter series use EPS-free packaging with molded pulp cushions made from recycled fiber-based material. The plastic reduction is expressed as a percentage of the total packaging plastic weight. The reduction varies depending on the printer model, with at least a 53% reduction in the new 36-inch model and at least a 72% reduction in the new 24-inch model, compared to the previous T200/T600 models.
31. The percentage reductions in energy consumption are based on tests conducted by HP, 2024. Data based on the implementation of auto-scheduled on/off usage in various printer models, measured on a monthly basis. Actual savings may vary depending on the specific usage patterns, printer models, and environmental conditions.
32. HP works collaboratively with our partners including WWF and Conservation International to protect, manage, and restore forests in many countries around the world. With HP, every print—regardless of paper brand—is addressed through HP's Forest Positive Framework to counteract risks of deforestation. To learn more, visit hp.com/forestfirst.
33. Applicable to select HP printers. GREENGUARD Gold Certification to UL 2818 demonstrates that products are certified to GREENGUARD standards for low chemical emissions into indoor air during product usage. For more information, visit ul.com/gg or greenguard.org.
34. Program availability varies. For details, see hp.com/hprecycle.
35. Data as of December 31, 2022. See hp.com/sustainableimpact.

