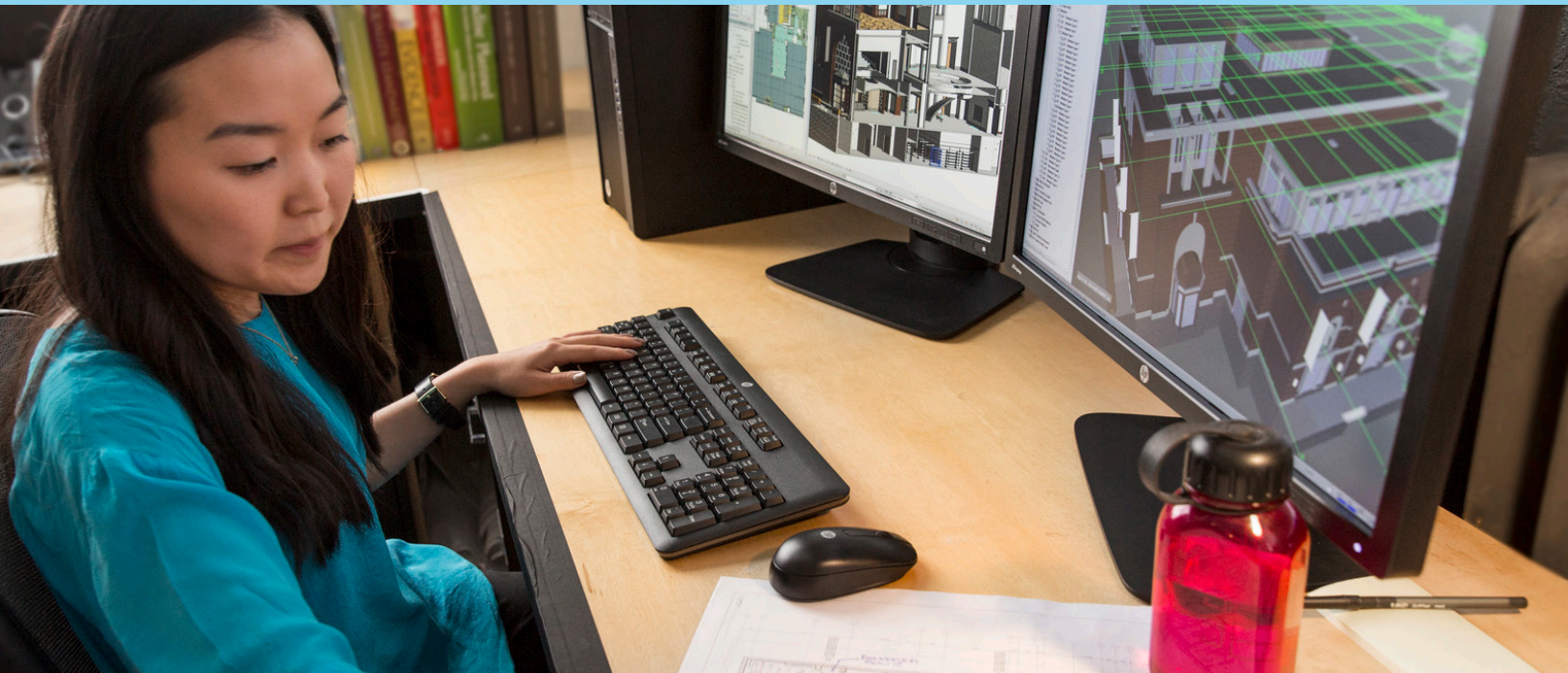


Designers access their graphics workstations from home – with crisp lines, no lag, and multiple monitors



INDUSTRY:
AEC



COUNTRY:
United States

Corpus Christi-based CLK Architects is a leading architectural firm in South Texas, specializing in healthcare, higher education, K-12, and municipalities. The firm offers comprehensive architectural services, including design development, construction documents, bidding and contract negotiation, space planning, interior design, and remodeling.

“When we went home to work, about half of our team had HP Anyware while the others still had GoToMyPC. Nobody who tried HP Anyware would go back. They won’t give up multi-monitor support and not having to trade resolution for smooth motion. If I rotate a 3D model from my home machine, the experience is almost exactly the same as it would be in the office.”

Javier Huerta, AIA, Principal and Vice President, CLK Architects



3D

applications efficiently worked from home

Protect

clients' intellectual property

No grainy

lines or lag

Objectives

- Enable designers to work in 3D applications as efficiently from home as in the office
- Comply with client confidentiality agreements
- Keep IT costs down

Approach

- Installed HP Anyware on office workstations: tower workstations with NVIDIA graphics processing units (GPUs)
- Also installed HP Anyware on employees' home devices
- Automatically connect home devices to the assigned office workstation using HP Anyware Manager

Business Outcomes

- Delivered excellent work-from-home experience—with multi-monitor support and no tradeoffs between performance and image resolution
- Protected intellectual property because files never leave the office—only encrypted pixels travel over the network
- Built foundation to later replace physical workstations with rack-mounted remote workstations



“When someone needs to connect to our remote media workstation, which we use for graphics or animation, I can give them access with a couple of clicks in HP Anyware Manager.

Javier Huerta,
AIA, Principal and Vice President, CLK Architects



Software

- HP Anyware, powered by PCoIP technology

Hardware

- Laptops
- PCoIP-enabled Thin Clients

Cloud Service Providers

- Local Linux Server with HP Anyware Manager

Objectives

Replicating the studio experience on the cloud

At CLK Architects, designers work with demanding applications like Autodesk Architecture, Engineering & Construction (AEC) Collection, Sketchup (3D design), Lumion (rendering), Bluebeam and Adobe software. “Design is about the visuals,” says Javier Huerta, principal and vice president. “When we’re working on a plan we need to see the details clearly. Grainy lines or lag are annoying and waste time.”

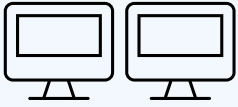
To make sure designers have a great application experience, CLK invests in powerful, rack-mounted workstations with NVIDIA graphics processing units (GPUs). The firm’s principals have occasionally worked from home for years, most recently using GoToMyPC. But with HP Anyware, productivity increased while using 3D applications like AutoCAD & Revit. With GoToMyPC, designers couldn’t have both high-resolution and fluid motion in Revit—they had to choose one or the other. Nor could they connect additional monitors, where they move application menus so that drawings can fill one entire monitor and tools could be on the other.

Approach

Securely accessing office workstations from home

Then CLK discovered HP Anyware. “HP Anyware gives us the same application experience we have in the office, with clean lines, fluid motion, and multi-monitor support,” Huerta says. Deployment was simple: HP Anyware is installed on office and home devices. Designers can access their remote workstation from anywhere, on any device with the software client installed. Most use an older office workstation or a laptop.

When designers log in, HP Anyware automatically connects the device to the assigned remote office workstation. “When someone needs to connect to our remote media workstation, which we use for graphics or animation, I can give them access with a couple of clicks in HP Anyware Manager,” says Huerta.



Multi-monitor support



High-resolution and fluid motion



Only encrypted pixels travel over the network

Business Outcomes

Successfully worked in remote environments

The state of Texas issued stay-at-home orders midway through the rollout. “When we went home to work, about half of our team had HP Anyware while the others still had GoToMyPC,” Huerta says. “Nobody who tried HP Anyware would go back. They won’t give up multi-monitor support and not having to trade resolution for smooth motion. If I 3D rotate a model from my home machine, the experience is almost exactly the same as it would be in the office.”

HP Anyware also helps CLK comply with client confidentiality agreements. Drawings and other proprietary information never leave the office. Only encrypted pixels travel over the network from the host workstation to the device’s display. That means client information isn’t exposed, even if a home device is lost or stolen.

To reduce IT costs, the firm replace physical workstations with on-premises rack mounted remote workstations. Designers will access their remote workstations from low-cost, energy-efficient PCoIP-enabled thin clients or zero clients. Huerta concludes, “HP Anyware gives us a lot of flexibility. Whether we work from home or the office, and no matter what device we use, we have a great experience with 2D and 3D applications.”

Learn more at hp.com/anyware

HP Services are governed by the applicable HP terms and conditions of service provided or indicated to Customer at the time of purchase. Customer may have additional statutory rights according to applicable local laws, and such rights are not in any way affected by the HP terms and conditions of service or the HP Limited Warranty provided with your HP Product.

© Copyright 2023 HP Development Company, L.P. The information contained herein is subject to change without notice. The only warranties for HP products and services are set forth in the express warranty statements accompanying such products and services. Nothing herein should be construed as constituting an additional warranty. HP shall not be liable for technical or editorial errors or omissions contained herein.

4AA8-2682ENW, March 2023