

# HP EliteBook Ultra G1i Notebook Next Gen AI PC



Elevate your influence with a sophisticated next-gen AI PC<sup>1</sup>

Leave a lasting impression with the brilliantly designed HP EliteBook Ultra G1i Next Gen AI PC, the new signature of success.



## Built for the new era of AI

Command the room with a PC that exudes sophistication with its ultra-slim profile and a 48 TOPS capable next-gen AI processor.<sup>2,3</sup> Spend more time leading, inspiring, and achieving with powerful AI that keeps your finger on the pulse of the business.



## AI-powered video & audio

Set the standard for clarity during video calls with the AI features of Poly Cam Pro<sup>4</sup> and the new 9MP camera.<sup>5</sup> Make your voice heard and easily hear others through studio-quality dual microphones and quad speakers.



## Precision touch

Quiet and smooth, you'll feel the difference of the haptic click pad that provides customizable tactile feedback. Use different pressure levels to control features and gestures to automate actions all on a 100% clickable surface.

## Intel® powers next Gen AI PCs

Free up time to focus on what matters with the latest Intel® Core™ Ultra processor<sup>2,3</sup> purposely built for the next era of AI software.<sup>6</sup> Three compute engines manage AI workloads, help improve video conferencing and allow for advanced content creation.

## Maximize every hour of work with the power of AI

This trusted AI Companion runs AI that unlocks new capabilities that help you excel in the demands of your position. Streamline your day and eliminate routine tasks so you can spend more time on the work you love.<sup>7</sup>

## The signature of success in an elegant design

In an elegant rich, blue color and new thin and ultralight design starting under 1.2kg,<sup>40</sup> the HP EliteBook Ultra G1i is a premium, sleek PC for modern leaders, that enables them to collaborate and share on a 180° panel that maximizes screen size with a 90.04% screen-to-body ratio.<sup>15</sup>

## Wherever you work, make it worry-free with HP Wolf Security

HP Wolf Security for Business<sup>8</sup> creates a hardware-enforced, always-on, resilient defense. From the BIOS to the browser, above, in, and below the OS, these constantly evolving solutions help protect your PC from modern threats, including AI-based attacks.

## Help protect our shared future

This HP EliteBook Ultra G1i Next Gen AI PC is designed using 90% recycled magnesium in the external covers<sup>9</sup>, at least 50% post-consumer recycled plastic in the keycaps<sup>10</sup>, and 100% recycled or certified sustainable sourced packaging.<sup>11</sup>

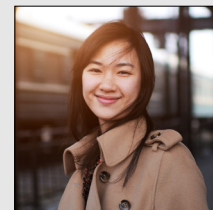


Copilot+PC<sup>39</sup>



Windows 11

## Designed for



Modern  
leaders

## Recommended ecosystem<sup>12</sup>



Voyager Free 60+  
UC Earbuds



HP Series 7 Pro - 34in WQHD  
Conferencing Monitor



HP 925 Ergonomic  
Wireless Mouse



HP 965 Ergonomic  
Wireless Keyboard

# HP EliteBook Ultra G1i

Processor Family	Latest generation Intel® Core™ Ultra 5 and 7 processors <sup>2</sup> with NPU <sup>3</sup>
OS	Windows 11 Home; Windows 11 Pro <sup>13</sup>
Dimensions	313.7mm x 217.25mm x 9.10mm(front)/12.1mm(rear); maximum height 14.9mm <sup>14</sup> ; 90.04% Screen-to-body Ratio <sup>15</sup>
Weight	Starting at 2.63 lbs. / 1.195 kgs non-touch panel (Weight will vary by configuration) <sup>16</sup> Starting at 2.68 lbs. / 1.215 kgs touch panel (Weight will vary by configuration) <sup>16</sup>
Display	14" diagonal; 3K (2880 x 1800); Non-Touch UWVA; BrightView; OLED + Low Blue Light; 400 nits; DCI-P3 100%; OLED Panel 14" diagonal; 3K (2880 x 1800); Touch <sup>17</sup> ; UWVA; BrightView; OLED + Low Blue Light; 400 nits; DCI-P3 100%; OLED Panel
Available Graphics	Intel® integrated graphics
Maximum Memory	16 GB up to 32GB LPDDR5X; Memory on Package <sup>18</sup>
Internal Storage	512 GB up to 2 TB PCIe® Gen4x4 NVMe™ M.2 SSDTLC <sup>19</sup> 512 GB up to 1 TB PCIe® Gen4x4 NVMe™ M.2 SED OPAL2 SSDTLC <sup>19</sup> 256 GB up to 512 GB PCIe® NVMe™ M.2 SSD <sup>19</sup>
Input Devices	Full-size, backlit, Atmosphere Blue color keyboard; Microsoft Precision Touchpad; Haptic click pad
Ports & Connectors	Right side: (2) Thunderbolt™ 4 with USB4 Type-C® 40Gbps signaling rate <sup>20</sup> (USB Power Delivery; DisplayPort™ 2.1); (1) Kensington Nano Slot Left side: (1) stereo headphone/microphone combo jack ; (1) USB Type-A 10Gbps signaling rate <sup>20</sup> (charging); (1) Thunderbolt™ 4 with USB4 Type-C® 40Gbps signaling rate <sup>20</sup> (USB Power Delivery; DisplayPort™ 2.1)
Communications	Intel® Wi-Fi 7 BE201 (2x2) <sup>21,22</sup> and Bluetooth® 5.4 wireless card; vPro®; Intel® Wi-Fi 7 BE201 (2x2) <sup>21,22</sup> and Bluetooth® 5.4 wireless card; non-vPro®
Audio & Camera	Audio by Poly Studio <sup>23</sup> ; four stereo speakers; dual microphones enhanced by AI noise reduction 9MP camera <sup>5</sup> (88° WFoV); IR Camera ; AI ISP camera Poly Camera Pro <sup>4</sup> Windows Studio Effects supported <sup>24</sup>
Battery Type	HP Long Life 6-cell 64Wh polymer
Power	HP 65 W USB Type-C® slim adapter; HP 65 W USB Type-C® GaN slim adapter; HP Fast Charge support
Security Management	Wolf Security for Business <sup>8</sup> includes: ; HP BIOSphere, Endpoint Security Controller (Gen4); Sure Start <sup>25</sup> ; Sure Admin (April 2025) <sup>26</sup> ; Sure Recover (Cloud) <sup>27</sup> ; Sure Click (Basic) <sup>28</sup> ; Sure Sense (Basic) <sup>29</sup> ; Secure Erase; Privacy Camera <sup>30</sup> ; Seamless Firmware Updates Additional Wolf Security attach solutions: Wolf Pro Security Edition PC <sup>31</sup> ; Sure Click Enterprise <sup>32</sup> Other Security Features: TPM 2.0; HP Wake on WLAN; Intel Management and Security Suite <sup>33</sup>
Management Features	HP Driver Packs; HP Client Catalog; HP Manageability Integration Kit <sup>34</sup> ; HP Connect for MS Endpoint Manager; HP Services Scan; HP Firmware Update and Recovery (HP FUR); HP Client Management Script Library (HP CMSL); HP Image Assistant; HP Mobile Application Management; HP Application Enabling Service; HSA Telemetry; Intel Connectivity (ICPS); HP Documentation; HEVC Codec; HP 1E Performance Assist; HP Programmable Key
Software	HP Connection Optimizer; HP Hotkey Support ; HP Support Assistant; myHP <sup>23</sup> ; Smart Sense <sup>35</sup> ; HP Privacy Settings; HP Notifications; Poly Lens 1.0; HP AI Companion <sup>7</sup> ; Poly Camera Pro <sup>5</sup> ; HP PC Hardware Diagnostics Windows
Sustainability	At least 90% PIR recycled Magnesium in the A, C and D covers <sup>9</sup> ; Keycaps made with at least 50% Post-consumer plastic <sup>10</sup> ; Bezel made from 25% cooking oil <sup>36</sup> + 45% Post-consumer recycled, 5% ocean bound plastic for the speaker box and bezel <sup>37</sup> ; 100% recycled or certified sustainable sourced packaging <sup>11</sup> ; EPEAT Climate+™ Gold registered in the US <sup>38</sup> ; ENERGY STAR® certified; TCO Certified



# HP EliteBook Ultra G1i

## Footnotes

1. Next Gen AI PC with 40 to 60 TOPS NPU to enable local AI processing.
2. Multicore is designed to improve performance of certain software products. Not all customers or software applications will necessarily benefit from use of this technology. Performance and clock frequency will vary depending on application workload and your hardware and software configurations. Intel's numbering, branding and/or naming is not a measurement of higher performance.
3. Features, software and AI applications that require an NPU may require software purchase, subscription or enablement by a software or platform provider, and third-party software may have specific configuration or compatibility requirements. Performance varies by use, configuration, and other factors.
4. Requires myHP application and Windows OS.
5. Camera resolution refers to the image sensor active pixels. The actual image capture pixels depend on the app and/or aspect ratio selected.
6. ISV solutions are sold separately and may require a subscription and NPU.
7. HP AI Companion is available preloaded on select HP next gen AI PCs or is available for download from the Microsoft store and requires a HP next gen AI PC with a NPU supporting 40-60 TOPS and requires Windows 11. Perform requires account set up within 30 days of PC boot or enrollment through the HP AI Companion app. Some features require customer upload of local data. Five (5) library 100MB limit each, supported files may vary and at launch include pdf, .txt, .docx files.
8. HP Wolf Security for Business requires Windows 10 or 11 Pro and higher, includes various HP security features and is available on HP Pro, Elite, Workstation, and RPOS products. See product details for included security features.
9. Recycled metal is expressed as a percentage of the total weight of the metal according to ISO 14021 definitions for metal parts over 25 grams. Recycling capabilities may vary depending on your location. Please refer to your local recycling program for detailed information.
10. Recycled plastic content percentage is based on the definition set in the IEEE 1680.1-2018 EPEAT standard.
11. 100% outer box packaging made from sustainably sourced certified and recycled fibers.
12. Displays and peripherals sold separately.
13. Not all features are available in all editions or versions of Windows. Systems may require upgraded and/or separately purchased hardware, drivers, software or BIOS update to take full advantage of Windows functionality. Windows is automatically updated and enabled. High speed internet and Microsoft account required. ISP fees may apply and additional requirements may apply over time for updates. See <http://www.windows.com>.
14. Front height measurement is near the front edge where the chassis bottom cover taper begins. Back height measurement is near the back edge where the chassis bottom cover taper ends, excluding transition area to rubber feet. Maximum height is measured at 14.9mm.
15. Screen to body ratio is the percent of active plus nonactive viewing area to active viewing area plus border. Measure with lid vertical to the desk
16. Weight will vary by configuration.
17. Touch will reduce actual brightness.
18. For systems configured with more than 3 GB of memory and a 32-bit operating system, all memory may not be available due to system resource requirements. Addressing memory above 4 GB requires a 64-bit operating system. Memory modules support data transfer rates up to 2666 MT/s, 2933 MT/s or 3200 MT/s as depending on processor config; with 1 DIMM per channel. Additional DIMM loading on any channel may impact maximum memory speed. Actual data rate is determined by the system's configured; See processor specifications for supported memory data rate.
19. For storage drives, GB = 1 billion bytes, TB = 1 trillion bytes. Actual formatted capacity is less. Portion of internal storage is reserved for preloaded content.
20. Actual throughput may vary
21. Wireless access point and Internet service required and sold separately. Availability of public wireless access points limited. Wi-Fi 7 (802.11BE) functionality requires compatible Windows 11 OS, compatible processor, and separately purchased Wi-Fi 7 router to support backwards compatibility with prior 802.11 specs. Available in countries where Wi-Fi 7 is supported. The specification for 802.11BE is a draft specification and is not final. If the final specification differs from the draft specification, it may affect the ability of the device to communicate with other 802.11BE devices.
22. Wi-Fi® supporting gigabit data rate is achievable with Wi-Fi 7 (802.11BE) when transferring files between two devices connected to the same router. Requires a wireless router, sold separately, that supports 160MHz channels.
23. Requires Windows OS.
24. Windows Studio Effects features require Windows 11 OS and a processor equipped with an NPU. For more detail visit <https://learn.microsoft.com/en-us/windows/ai/studio-effects/>
25. HP Sure Start Gen7 is available on select HP PCs and requires Windows 10 Pro and higher
26. HP Sure Admin requires Windows 10 and HP BIOS.
27. HP Sure Recover is available on select HP PCs and requires Windows 10 and an open network connection. You must back up important files, data, photos, videos, etc. before using HP Sure Recover to avoid loss of data. Network based recovery using Wi-Fi is only available on PCs with Intel Wi-Fi Module.
28. HP Sure Click requires Windows 10 and higher. See [https://bit.ly/2PrLT6A\\_SureClick](https://bit.ly/2PrLT6A_SureClick) for complete details.
29. HP Sure Sense is available on select HP PCs with Windows 10 Pro, Windows 10 Enterprise, Windows 11 Pro, or Windows 11 Enterprise OS.
30. HP Privacy Camera only available PCs equipped with HD or IR camera and must be installed at the factory
31. HP Wolf Pro Security Edition (including HP Sure Click Pro and HP Sure Sense Pro) is available preloaded on select SKUs and, depending on the HP product purchased, includes a paid 1-year or 3-year license. The HP Wolf Pro Security Edition software is licensed under the license terms of the HP Wolf Security Software - End-User license Agreement (EULA) that can be found at: [https://support.hp.com/us-en/document/ish\\_3875769-3873014\\_16](https://support.hp.com/us-en/document/ish_3875769-3873014_16) as that EULA is modified by the following: "7. Term. Unless otherwise terminated earlier pursuant to the terms contained in this EULA, the license for the HP Wolf Pro Security Edition (HP Sure Sense Pro and HP Sure Click Pro) is effective upon activation and will continue for either a twelve (12) month or thirty-six (36) month license term ("Initial Term"). At the end of the Initial Term you may either (a) purchase a renewal license for the HP Wolf Pro Security Edition from HP.com, HP Sales or an HP Channel Partner, or (b) continue using the standard versions of HP Sure Click and HP Sure Sense at no additional cost with no future software updates or HP Support.
32. HP Sure Click Enterprise is sold separately and requires Windows 10 or higher and Microsoft Internet Explorer, Google Chrome, Chromium or Firefox are supported. Supported attachments include Microsoft Office (Word, Excel, PowerPoint) and PDF files, when Microsoft Office or Adobe Acrobat are installed.
33. Available as an optional free download
34. HP Manageability Integration Kit can be downloaded from <http://www8.hp.com/us/en/ads/clientmanagement/overview.html>.
35. Smart Sense requires the myHP app and Windows 11 OS. Features may vary by platform.
36. Bezel manufactured from cooking oil bio-feedstock according to the mass balance approach
37. Percentage of ocean-bound plastic contained in each component varies by product. Ocean Bound plastic is expressed as a percentage of the total weight plastic. Ocean Bound plastic is based on the definition set by the UL2809 standard
38. Based on US EPEAT® registration according to IEEE 1680.1-2018 EPEAT®. EPEAT® status varies by country. See [www.epeat.net](http://www.epeat.net) for registration status and tier levels by country.
39. On some devices, Copilot+ PC experiences require free updates available starting later this year and continuing into 2025. Timing varies by device and region. See [aka.ms/copilotpluspcs](https://aka.ms/copilotpluspcs)
40. Weight will vary by configuration. Does not include power adapter.

Copyright 2024 HP Development Company, L.P. The information contained herein is subject to change without notice. The only warranties for HP products and services are set forth in the express warranty statements accompanying such products and services. Nothing herein should be construed as constituting an additional warranty. HP shall not be liable for technical or editorial errors or omissions contained herein. Microsoft®, Windows® 11, and Windows® 11 Pro are registered trademarks or trademarks of Microsoft Corporation in the United States and/or other countries.

Intel®, Intel Core, Intel vPro and Intel Optane are trademarks of Intel Corporation or its subsidiaries in the U.S. and/or other countries. Thunderbolt is a trademark of Intel Corporation or its subsidiaries in the U.S. and/or other countries. Bluetooth is a trademark owned by its proprietor and used by HP Inc. under license. USB Type-C® and USB-C® are registered trademarks of USB Implementers Forum. DisplayPort™ and the DisplayPort™ logo are trademarks owned by the Video Electronics Standards Association (VESA) in the United States and other countries. Members of Wi-Fi Alliance® are bound to follow the requirements of the Brand Style guide pursuant to the Certification Mark License Agreement. Please contact [brandusage@wi-fi.org](mailto:brandusage@wi-fi.org) if you have any questions about Wi-Fi Alliance mark usage requirements.

