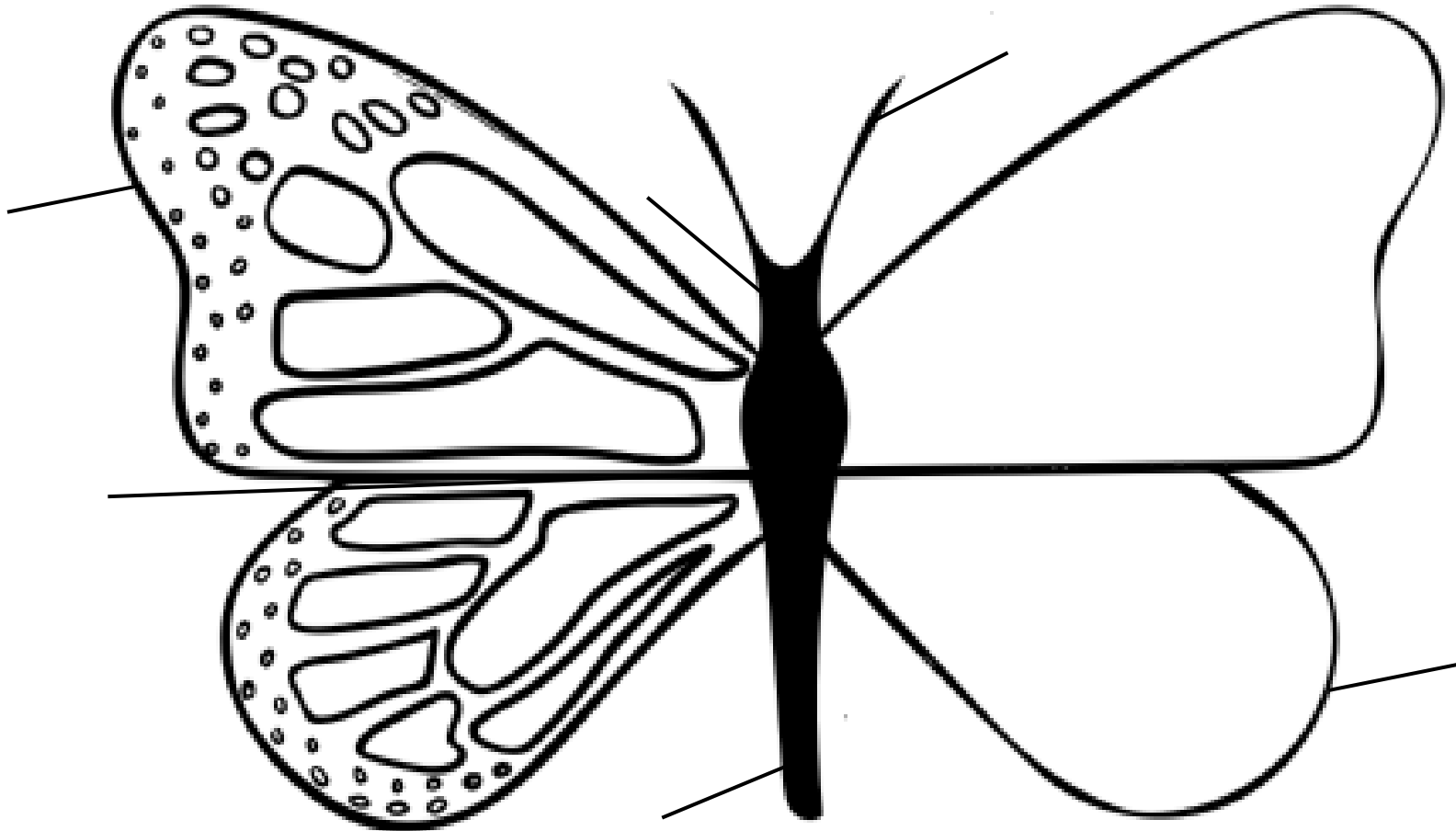


Beatrice the Butterfly

Beatrice seems to have lost her pattern on one set of wings, can you give her back her pattern? Can you make sure she is symmetrical?



Top Tip: To make Beatrice symmetrical, you can fold her in half, paint one side and fold again to make a beautiful symmetrical pattern.

Interesting Fact:
Almost all butterflies are symmetrical, this is because all cells on both wings have the same genetic code.

Can you label Beatrice's body? Cut out the labels and stick them next to the correct part of Beatrice's body.

Forewing

The forewings are the two upper wings.

Hindwing

The hindwings are the two lower wings.

Head

The head contains the brain, two compound eyes and the proboscis.

Antenna

The antennae are used for sense of smell and balance.

Thorax

The legs and wings are attached to the thorax. The thorax is the middle of the body.

Abdomen

The abdomen contains vital organs such as the heart.

With the help of an adult, can you research more information about the different parts of a butterfly's anatomy?

Here's a few questions to get you started...

What is the proboscis?

What other organs does a butterfly have?

What is a compound eye?

How fast can a butterfly fly?

Does a butterfly have any bones?

Can you find out any other interesting facts?

How long is a butterfly's lifespan?

Can you find out more about why butterflies are symmetrical?