

## Remotely track and secure PCs

### The Problem

Managing and protecting a PC fleet is difficult, creating asset management and data security challenges.

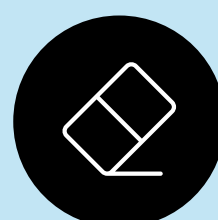
### How the Solution Works



Locate a PC in real time



Lock a PC to prevent unauthorized access



Erase a PC's primary disk to keep data safe

### Business Outcomes



#### Asset Management

Decrease costs by maintaining tighter control over PC fleet.



#### Data Security

Secure data from unauthorized access.



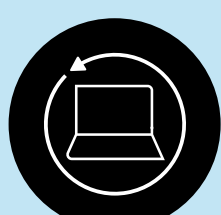
#### Financial Risk Management

Lower risk of device loss for device as a service or leasing.



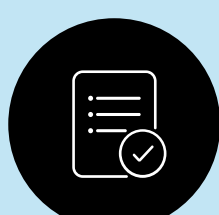
#### Find my PC

Find lost or stolen PCs



#### Sustainable Device Lifecycle

Manage devices from deployment to retirement, re-issue or recycle.



#### Audit & Compliance

Efficiently satisfy data and asset management controls.

### Benefits



#### Risk management

- Protect Data
- Reduce PC losses



#### IT operations

- Efficiently manage PC fleet
- Reduce tickets and PC remediations



#### User experience

- Quickly locate lost PC
- Reduce stress and anxiety

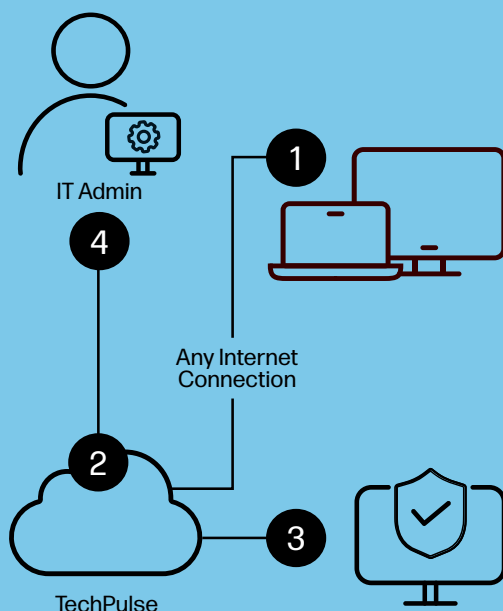
## Solution Architecture

### 1 Supported HP PC

### 2 TechPulse for centralized management

### 3 Approver application for secure approval of sensitive Lock & Erase commands

### 4 IT Admin System Administration: IT Staff or Outsourced Partner



### Taking Fleet Management to the Next Level with Wolf Connect

HP Protect and Trace works over any Wi-Fi / Internet connection.

But for the highest level of assurance, consider Protect and Trace with Wolf Connect, which works over cellular communications, even if the target PC is off!

You can mix Wi-Fi and Wolf Connect target PCs in a single network, with an identical operational model.



#### Management

TechPulse is a unified fleet management console for:

- Protect & Trace Wi-Fi
- Protect & Trace with Wolf Connect
- ActiveCare
- Proactive Insights



#### Advanced Security

Separation of duties for Lock/Erase reduces risk of denial of service or data compromise.

BIOS level lock and erase for superior data protection.

Visit the following links to learn more about additional [Technical Requirements](#), and the [Terms of Service](#).